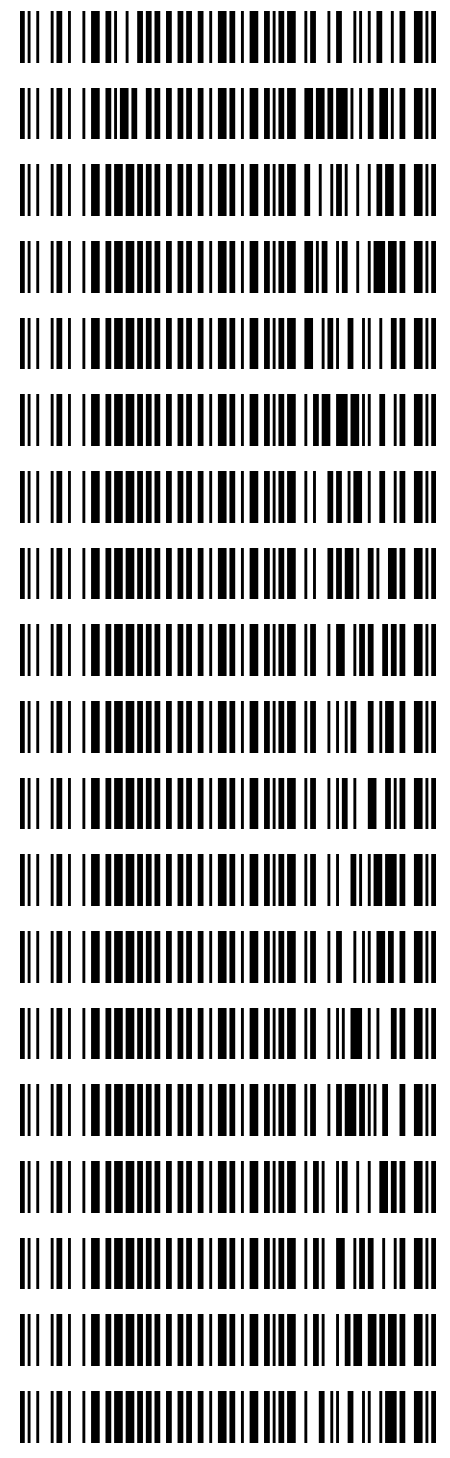


Worklist: 2687

<u>LAB_CASE</u>	<u>ITEM</u>	<u>TASK_ID</u>	<u>DESCRIPTION</u>
C2018-1754	2	126940	AM 3 Urine Carboxy-THC
M2018-4258	4	126941	AM 3 Urine Carboxy-THC
P2018-2340	1	126942	AM 3 Urine Carboxy-THC
P2018-2466	1	126943	AM 3 Urine Carboxy-THC
P2018-2480	1	126944	AM 3 Urine Carboxy-THC
P2018-2507	1	126945	AM 3 Urine Carboxy-THC
P2018-2513	1	126946	AM 3 Urine Carboxy-THC
P2018-2523	1	126947	AM 3 Urine Carboxy-THC
P2018-2572	1	126948	AM 3 Urine Carboxy-THC
P2018-2573	1	126949	AM 3 Urine Carboxy-THC
P2018-2574	1	126950	AM 3 Urine Carboxy-THC
P2018-2575	1	126951	AM 3 Urine Carboxy-THC
P2018-2576	1	126952	AM 3 Urine Carboxy-THC
P2018-2578	1	126953	AM 3 Urine Carboxy-THC
P2018-2580	1	126954	AM 3 Urine Carboxy-THC
P2018-2584	1	126955	AM 3 Urine Carboxy-THC
P2018-2586	1	126956	AM 3 Urine Carboxy-THC
P2018-2587	2	126957	AM 3 Urine Carboxy-THC
P2018-2606	1	126958	AM 3 Urine Carboxy-THC



The run stopped several times over the duration and had to be restarted. cg

Data Path : I:\Instrument Data\Pocatello\Major Mass Spec\CDS\2018\am 3 worklist 2687\
Data File : THC-PC1.D
Acq On : 14 Sep 2018 14:33
Operator : ISP\datastor
Sample : Spiked Positive c-THC Control
Misc : c-THC lot # 0497429 in Negative Lot # POC062718; Worklist 2687
ALS Vial : 2 Sample Multiplier: 1

Integration Parameters: events.e
Integrator: ChemStation

Method : C:\gcms\1\methods\TOX.M
Title :

Signal : EIC Ion 371.00 (370.70 to 371.70): THC-PC1.D\data.ms

peak #	R.T. min	first scan	max scan	last scan	PK TY	peak height	corr. area	corr. % max.	% of total
1	6.670	338	377	395	PV	2809	55072	100.00%	93.332%
2	7.114	518	531	554	PV	148	3934	7.14%	6.668%

Sum of corrected areas: 59006
Signal : EIC Ion 473.00 (472.70 to 473.70): THC-PC1.D\data.ms

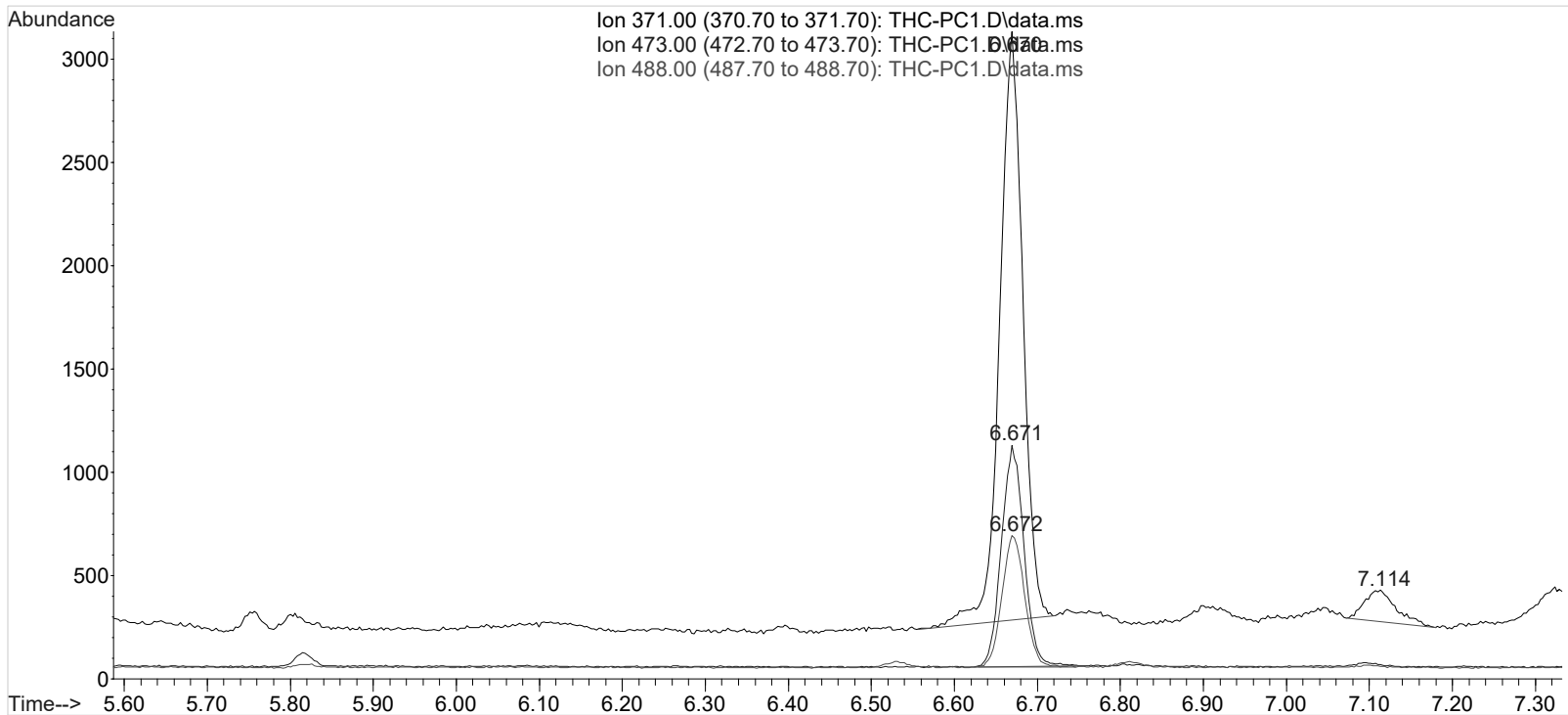
peak #	R.T. min	first scan	max scan	last scan	PK TY	peak height	corr. area	corr. % max.	% of total
1	6.671	361	378	408	BB	1054	20272	100.00%	100.000%

Sum of corrected areas: 20272
Signal : EIC Ion 488.00 (487.70 to 488.70): THC-PC1.D\data.ms

peak #	R.T. min	first scan	max scan	last scan	PK TY	peak height	corr. area	corr. % max.	% of total
1	6.672	363	378	404	BV	632	12205	100.00%	100.000%

Sum of corrected areas: 12205

TOX.M Mon Sep 17 09:34:03 2018



Data Path : I:\Instrument Data\Pocatello\Major Mass Spec\CDS\2018\am 3 worklist 2687\
Data File : THC-PC2.D
Acq On : 16 Sep 2018 14:12
Operator : ISP\Datastor
Sample : Spiked Positive c-THC Control
Misc : c-THC lot # 0497429 in Negative Lot # POC062718; Worklist 2687
ALS Vial : 2 Sample Multiplier: 1

Integration Parameters: events.e
Integrator: ChemStation

Method : C:\gcms\1\methods\TOX.M
Title :

Signal : EIC Ion 371.00 (370.70 to 371.70): THC-PC2.D\data.ms

peak #	R.T. min	first scan	max scan	last scan	PK TY	peak height	corr. area	corr. % max.	% of total
1	5.751	40	58	65	PV	140	1896	1.36%	1.119%
2	5.799	65	75	83	PV 2	165	2145	1.54%	1.265%
3	6.614	333	358	359	PV	215	4002	2.88%	2.360%
4	6.664	359	375	393	VV 2	7328	139111	100.00%	82.049%
5	6.742	393	402	428	VV 2	146	6017	4.33%	3.549%
6	6.910	442	460	475	VV	174	5052	3.63%	2.979%
7	7.036	493	504	515	VV	138	3330	2.39%	1.964%
8	7.101	515	527	544	VV 2	308	7992	5.75%	4.714%

Sum of corrected areas: 169546
Signal : EIC Ion 473.00 (472.70 to 473.70): THC-PC2.D\data.ms

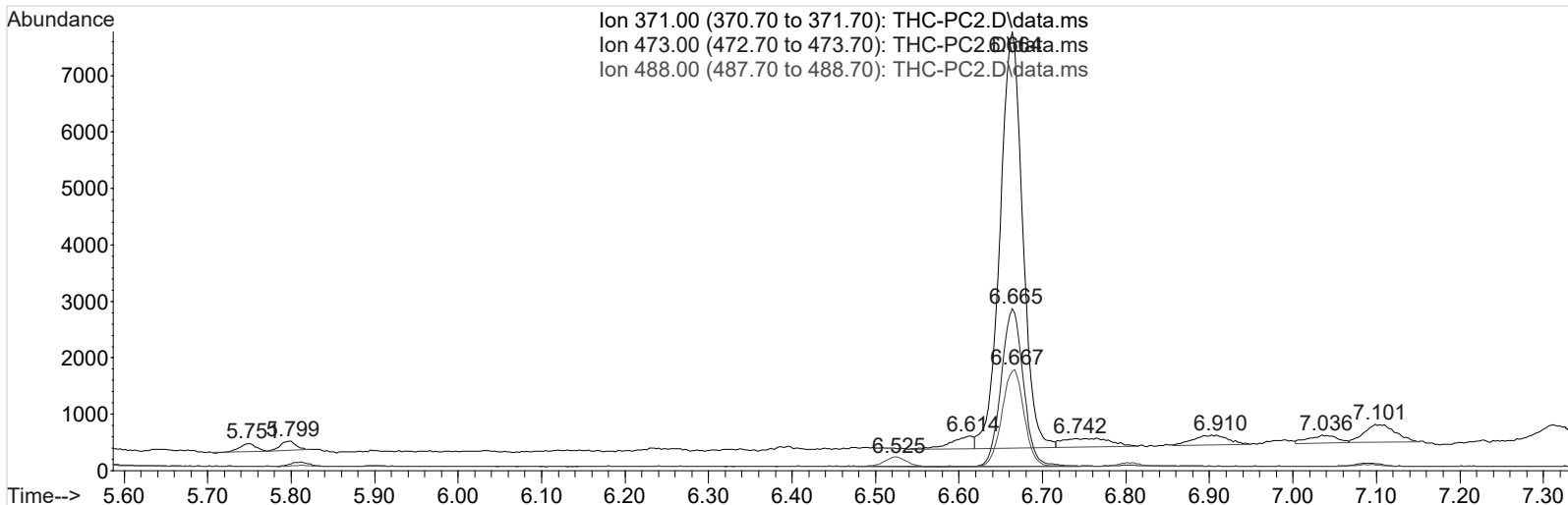
peak #	R.T. min	first scan	max scan	last scan	PK TY	peak height	corr. area	corr. % max.	% of total
1	6.665	338	375	404	BB 2	2779	51367	100.00%	100.000%

Sum of corrected areas: 51367
Signal : EIC Ion 488.00 (487.70 to 488.70): THC-PC2.D\data.ms

peak #	R.T. min	first scan	max scan	last scan	PK TY	peak height	corr. area	corr. % max.	% of total
1	6.525	301	327	344	PV 2	171	3205	10.07%	9.147%
2	6.667	344	376	403	PB 2	1714	31837	100.00%	90.853%

Sum of corrected areas: 35043

TOX.M Mon Sep 17 09:35:01 2018



CS

Area Percent Report

Data Path : I:\Instrument Data\Pocatello\Major Mass Spec\CDS\2018\am 3 worklist 2687\
 Data File : THC-NC.D
 Acq On : 14 Sep 2018 14:22
 Operator : ISP\datastor
 Sample : Negative Control
 Misc : Lot # POC062718; AM #3 Worklist 2687
 ALS Vial : 1 Sample Multiplier: 1

None detected. CS

Integration Parameters: events.e
 Integrator: ChemStation

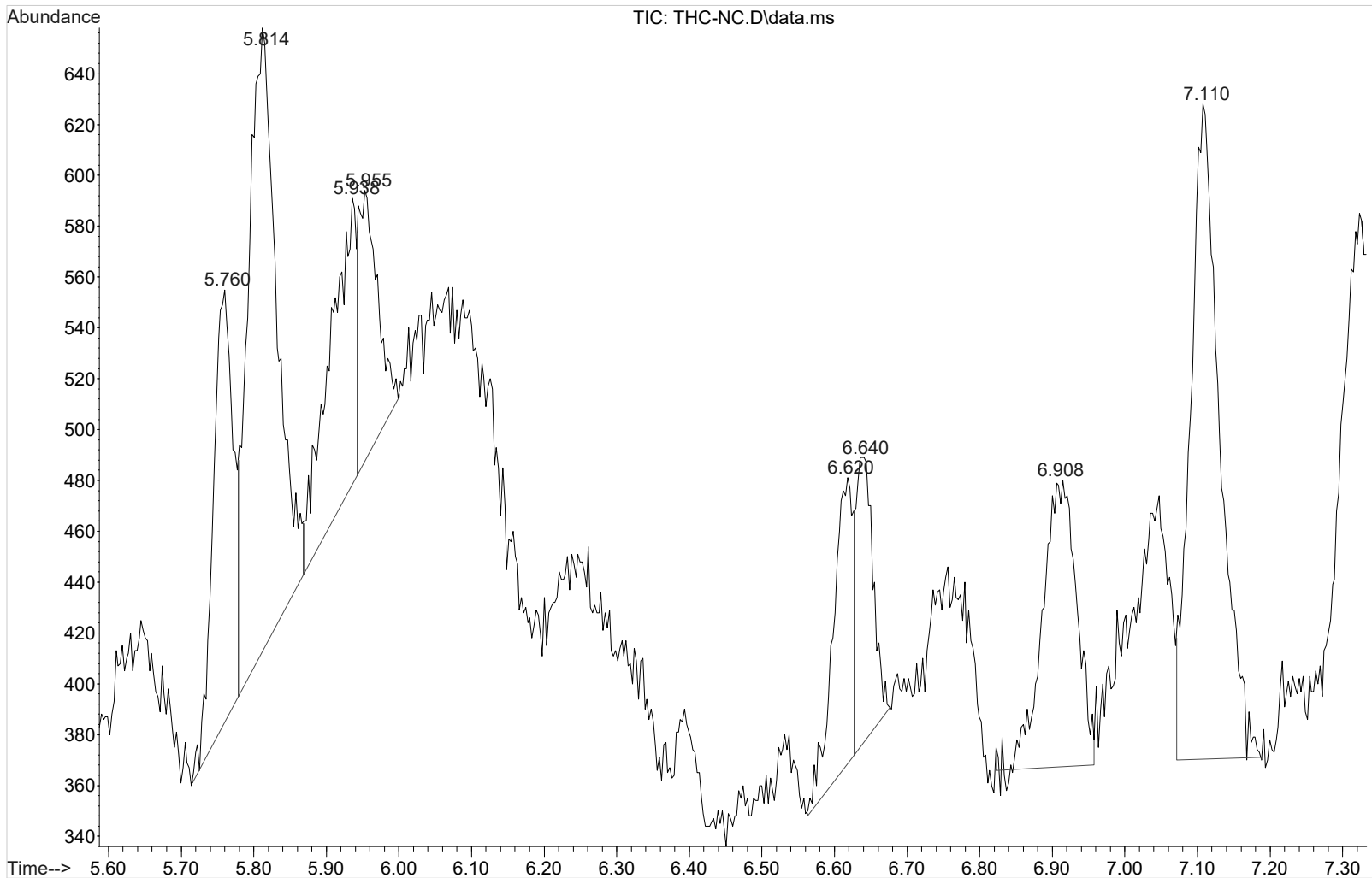
Method : C:\gcms\1\methods\TOX.M
 Title :

Signal : TIC: THC-NC.D\data.ms

peak #	R.T. min	first scan	max scan	last scan	PK TY	peak height	corr. area	corr. % max.	% of total
1	5.760	45	61	67	PV	167	3124	42.85%	10.537%
2	5.814	67	80	99	VV 3	242	6909	94.77%	23.306%
3	5.938	99	123	124	VV	110	2860	39.24%	9.649%
4	5.955	124	129	144	VV 2	104	1928	26.44%	6.503%
5	6.620	340	360	362	PV	110	2006	27.51%	6.766%
6	6.640	362	367	379	VB	112	1900	26.07%	6.410%
7	6.908	430	460	477	BV	111	3628	49.76%	12.237%
8	7.110	516	530	557	VV	257	7290	100.00%	24.592%

Sum of corrected areas: 29644

TOX.M Mon Sep 17 09:44:18 2018



Data Path : I:\Instrument Data\Pocatello\Major Mass Spec\CDS\2018\am 3 worklist 2687\
Data File : THC-C3.D
Acq On : 14 Sep 2018 14:56
Operator : ISP\datastor
Sample : Biorad C3 Control
Misc : C3 Lot # 68440; Worklist 2687
ALS Vial : 3 Sample Multiplier: 1

Integration Parameters: events.e
Integrator: ChemStation

Method : C:\gcms\1\methods\TOX.M
Title :

Signal : EIC Ion 371.00 (370.70 to 371.70): THC-C3.D\data.ms

peak #	R.T. min	first scan	max scan	last scan	PK TY	peak height	corr. area	corr. % max.	% of total
1	5.799	65	75	94	VB	281	4298	28.96%	22.454%
2	6.666	362	376	393	VV 2	741	14842	100.00%	77.546%

Sum of corrected areas: 19140

Signal : EIC Ion 473.00 (472.70 to 473.70): THC-C3.D\data.ms

peak #	R.T. min	first scan	max scan	last scan	PK TY	peak height	corr. area	corr. % max.	% of total
1	6.669	356	377	389	BV 2	265	4586	100.00%	100.000%

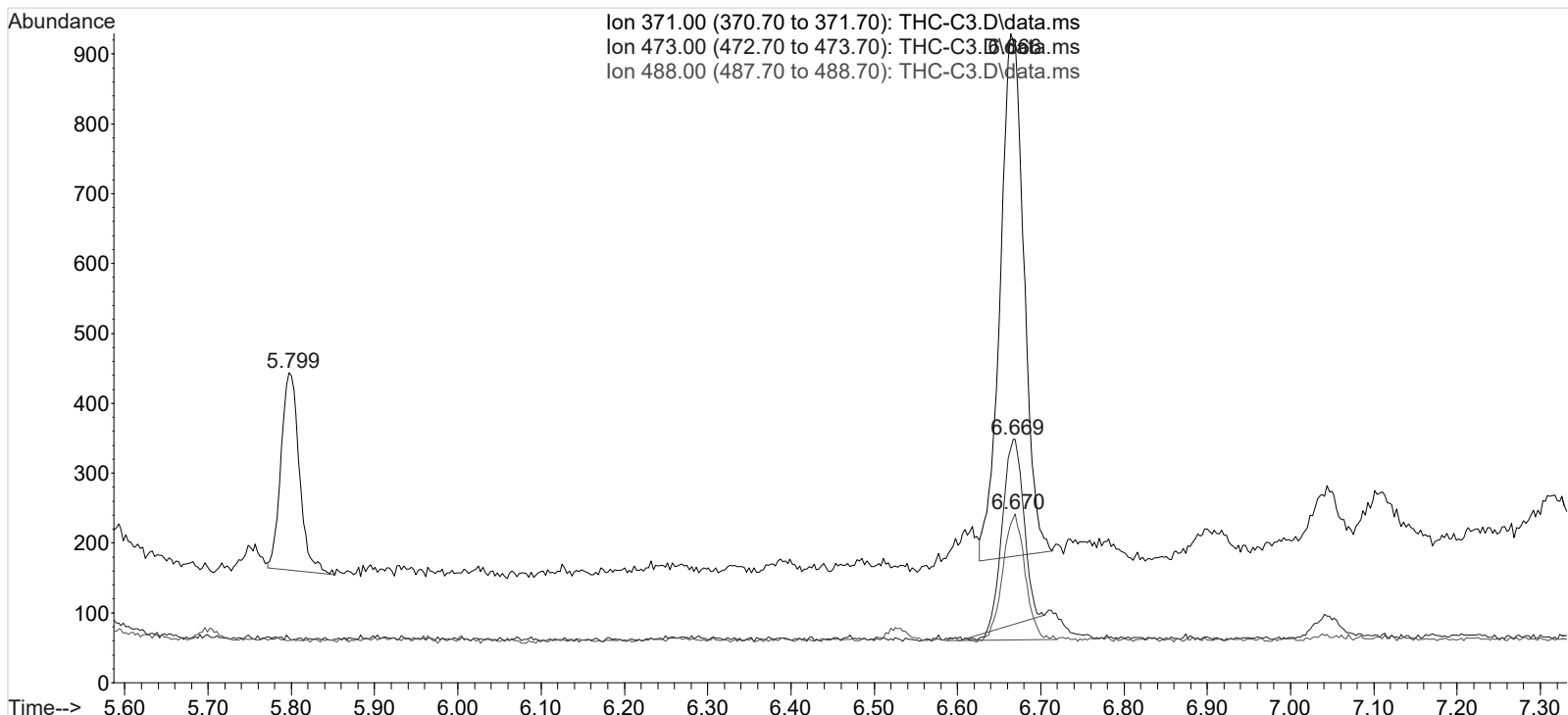
Sum of corrected areas: 4586

Signal : EIC Ion 488.00 (487.70 to 488.70): THC-C3.D\data.ms

peak #	R.T. min	first scan	max scan	last scan	PK TY	peak height	corr. area	corr. % max.	% of total
1	6.670	349	377	394	BB 2	177	3362	100.00%	100.000%

Sum of corrected areas: 3362

TOX.M Mon Sep 17 09:39:13 2018



Run Date: 9/14/2018

Worklist #: 2687

Laboratory Case #: BioRad C3 Lot: 68440

Case Calculations:

EIC Ion 371 Corr. Area: 14842

EIC Ion 473 Corr. Area: 4586

473:371 Ratio: **0.309**488:371 Ratio: **0.227**

EIC Ion 488 Corr. Area: 3362

Quality Control Calculations:**1st Control****2nd Control**

EIC Ion 371 Corr. Area: 55072

139111

EIC Ion 473 Corr. Area: 20272

51367

EIC Ion 488 Corr. Area: 12205

31837

Ratio of 473:371: 0.368

0.369

Average: 0.369

Ratio of 488:371: 0.222

0.229

Average: 0.225

Acceptable Retention Time Range: 6.570 to 6.764

Approximate Minimum Corrected Area of 371 Ion: 11014

Acceptable 473:371 Ratio Range: 0.295 to 0.442

Acceptable 488:371 Ratio Range: 0.180 to 0.270